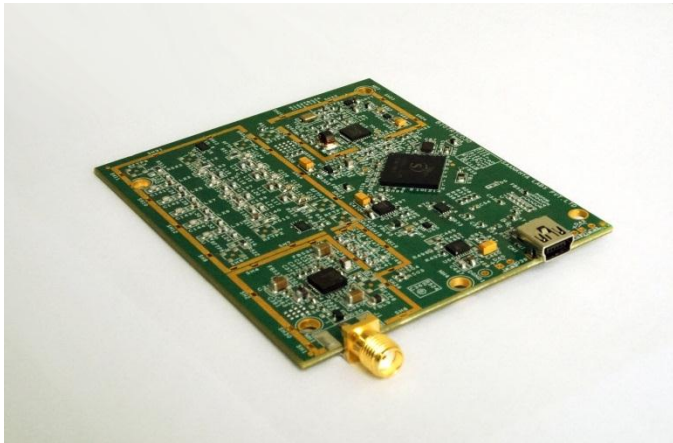


## DESCRIPTION

SLM901xx module is the World's First Software Defined Single Channel Digital TV Modulator solution to support Worldwide Digital Terrestrial and Cable TV Standards. Based on Saankhya Labs SL900x Modulator IC, the SLM901UU USB module supports multiple modulation standards and custom modulation through software update, without consuming any computation cycles from host CPU.



## STANDARDS SUPPORTED

Standard	Bandwidth	Modulation	Data Rate
ATSC	6 MHz	8-VSB	19 Mbps
ISDBT	6 MHz	OFDM 1-seg/13-seg	23 Mbps
DVB-T	8 MHz	OFDM	30 Mbps
QAM/DVB-C	6/8 MHz	16/64/256 QAM	40 Mbps
Custom	Program for Secure Communication		

## APPLICATIONS

- Video distribution Head-end / Hospitality TV, SMATV
- Digital Signage, Trade Shows, Shopping complexes
- Drone HD-Video Wireless Transmitter
- Custom Modulation for Secure content distribution
- Surveillance, remote monitoring and control

## FEATURES

- Frequency Range: 48 - 860 MHz (VHF/UHF)
- Configurable Bandwidth : 6, 7 or 8 MHz
- Modulation: 8VSB, BPSK, QPSK, OFDM, 16-256QAM
- Output Level: -20 dBm to 0 dBm (1mW)
- Carrier Suppression: > 35 dB
- Adjacent Channel Leakage Ratio (ACLR) : > 40 dBc
- Modulation Error Ratio (MER) > 40dB
- Power consumption < 1.9W (5V, 375mA)
- Power supply – derived from USB
- Input Connector: USB Mini-B
- Output Connector: 50 ohm F-Type Female (SMA)
- Board Dimensions (approx.): 2.77" x 3.26"
- Board Weight: <100g
- Linux/Windows/Android Application Software

## ORDERING INFORMATION

Part Number: SLM901UU

Availability: Now

Unit Price: \$350

Contact: [info@saankhyalabs.com](mailto:info@saankhyalabs.com)